



# EMM INTERNATIONAL BV

**EMM International is the creative centre for innovative applications in all paint processing branches. At EMM, new inventions are developed which are essential for working with paint effectively and efficiently.**

Practical solutions are conceived, developed, tested and produced based on the collaborative work of the Blue Box. Blue box is EMM's think tank, in which dealers and end users like painters and finishers from all over the world are involved on a rolling basis. This results in solutions that increases the productivity of the workflows, increases the quality of the work and ensures a high safety standard. Together we facilitate excellent work for paint processors in the automotive, aviation, nautic and industry.

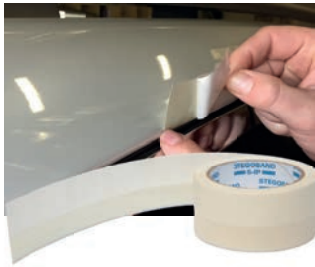
EMM features the brands Colad, Hamach and Ronin Tools. Over the last three years EMM introduced over 40 new and innovative products like Colad Turbomix Paintsaver®, Colad Snap Lid System®, Hamach HR1400, Colad BodyGuard® Paint Suit and Colad Orange™ Masking Tape. Increase productivity with the new insights, with EMM you make it happen.

## INDEX

MASKING	3
SANDING / SANDING MACHINES	4
SURFACE PREPARATION	5
PAINT PREPARATION	6-7
SNAP LID SYSTEM®	8-9
BOOTH MAINTENANCE SOLUTIONS	10-11
PERSONAL PROTECTION	12-14
CHEMICALS AND ADHESIVES / MIXING ROOM	15



# MASKING



## Stegoband Perforated

906023 (10/11 mm x 10 m)

This Stegoband is perforated every 4 cm so it is easy to tear off. It has a wide edge of 21 mm in total. It is also possible only to use the small edges of 10 or 11 mm. Stegoband can be removed easily leaving no residue.

Per roll in a dispenser box.



## Foam Masking Tape

908013 (13 mm x 50 m)

908019 (19 mm x 35 m)

Foam Masking Tape is the product to use for masking gaps between bonnets, doors and car body parts.

Per roll in a dispenser box.



## Permanent Attachment Tape

900509 9 mm x 9 m

900512 12 mm x 9 m

Transparent double-face tape, for attaching strips, registration plates and accessories to cars. Clear, permanent bonding, double-sided film. Thin and highly durable. Quick and simple to apply. Resulting in an appearance equal to O.E.M. standards. Available in 9 and 12 mm x 9 m. Per roll in a plastic bag.



## Fine Line Tape

903003 3 mm x 55 m

903006 6 mm x 55 m

903009 9 mm x 55 m

903012 12 mm x 55 m

903019 19 mm x 55 m

Green fine line tape, specially designed to mask objects if excellent color separation is required when spraying with multiple colors, printing or custom painting. It adheres to a wide variety of surfaces and can be used in combination with water-based paint systems. It can be removed easily without leaving any residue.

1 roll in a plastic bag.



## Colad Orange™ Masking Tape

900019 (48 rolls - 19 mm x 50 m)

900038 (24 rolls - 38 mm x 50 m)

Colad Orange™ Masking Tape is a orange coloured masking tape that is high temperature and UV resistant! It also has a unique adhesive compound. It is suitable for all types of paint systems!

- This tape is UV and weather resistant up to 8 days!
- It leaves no residue after removal, has exceptional sharp lines and has a temperature resistance of 100°C for 1 hour.

## Electrical Foil Cutter

2075



Electrical cutter for plastic foil and masking paper, supplied in a bag with belt strap for easy storage. The special design of this cutter guarantees that cutting is simple, safe and prevents damage to the vehicle. It ensures fast and effortless cutting of the masking foil. Requires 2 x AA batteries (not included). Per piece.

2076

Spare blades for Foil Cutter. Set of 2 blades (above and below blade).

## Magnetic Foil Cutter

2070



Very practical cutter for plastic foil and masking paper with magnet on back. The special design of this cutter guarantees that cutting is simple, safe and prevents damage to the vehicle.

Per 10 pcs.

## Mobile Foil Dispenser II

2062



This Mobile Foil Dispenser is ideal for covering vehicles with plastic foil. So easy to use that one man can do the job. Simply take the dispenser to the object, stretch the foil over the vehicle and cut along the cutter guide with the foil cutter. Two rolls can be mounted in the dispenser saving space in the workshop (4 m and 6 m). Size: 71 cm x 117.5 x 46 cm. Per piece. Not assembled.

## Sensor Covers

9090300



Accelerate your sanding and painting process by using this efficient solution! Due to its patented design the stickers are easy to apply and remove. Suitable to fit over most modern parking sensors. Over-paintable and possible to sand over by machine. Dispenserbox 300 pcs.

# SANDING MATERIAL



**Control Powder**  
8035EMM

Sanding guide to be used as a sanding control coat on fillers. This product is very economical in use and can be widely applied. Per box of 100 g and applicator in each box.



**Sanding Cork**  
5200

Block made of cork for wet or dry sanding. Three layers of natural cork, sealed together. On one side the edges are sharp for precise application and on the other side the edges are shaped for optimal grip. Size: approx. 25 x 60 x 105 mm. Per piece.



**Viscose Sponges**  
9150EMM

Viscose Sponges for washing or adding water during any sanding process. Dimensions 135 x 90 x 34 mm. 10 pieces in a plastic bag.

## Foam Sanding Pads

- 38700180 (Fine)
- 38700220 (Super Fine)
- 38700280 (Micro Fine)



Highly flexible sanding pads for hand sanding. Can be used for wet or dry sanding to sand parts that machines cannot reach. Long-lasting product. Size: 115 x 140 mm. Box of 20 pads.

## Surface Protection Tape

905050 (50 mm x 50 m)



For protection during sanding, grinding and light blasting jobs. Perfectly suited for the temporary wedging of glued windscreens. 1 roll in a plastic bag.

## Scuff Rolls 115 mm x 10 m

- 38200800 (Red Type A Very Fine)
- 38201500 (Grey Type S Ultra Fine)
- 38202000 (Gold Type A Micro Fine)



1 roll shrink wrapped

## Scuff Discs Ø 150 mm

- 38500800 (Red Type A Very Fine)
- 38501500 (Grey Type S Ultra Fine)



10 discs shrink wrapped

All products from **Colad**  
inventing more

# SANDING MACHINES



**Sander PHP 165 VD Planetary Pneumatic**  
**150 mm**  
000240

Specially designed for the preparation process because of its very high sanding capacity. Equipped with a useful digital air pressure read-out.



**Sander PHP 300 VD Planetary Pneumatic**  
**200 mm**  
000241

Specially designed for the preparation process because of its very high sanding capacity. The Ø 200 mm pad is designed for big surfaces. Equipped with a useful digital air pressure read-out.

# SURFACE PREPARATION

## Pump Spray 1000 ml without Coding Rings®

9705Z



The Colad pump spray is equipped with VITON O-rings to resist both water and/or solvent based degreasers and the spray mist is adjustable to fit your job perfectly.

### Wall Bracket

970506



Organise your workshop and use the Colad Wall Bracket to hang the Pump Spray on and have a central place for fluid identification. 2 pcs and connectable. Dimensions L x W x H (cm): 38 x 16.6 x 1.70 cm.

## Pump Spray Coding Rings®

9705CR



Set of 6 coding rings including 2 Color Identification Charts. Easy to apply on your Pump Spray bottle. Helps you to identify the content quickly.

## Tack Wipers Waffled

9175 (Unfolded: 81 x 92 cm, Folded: 14 x 17 cm)



Recommended for: Large dust particles  
Material: Cotton Gauze  
Structure: Open structure: waffled format  
Packaged in a bag

### Properties

- For use with water and/or solvent based paint systems
- Naturally treated (no chemical treatment or bleaching)
- Anti-static

## Tack Cloth Waterbased

000805 (61 x 37 cm)



Recommended for: Small, medium and large dust particles  
Material: Viscose and Polyester  
Structure: Combined compact and open structure  
Package: Set of 10 pieces in a plastic bag

- For use with water and/or solvent based paint systems
- Can be applied as transition edge remover
- Removes imperfections on various substrates before spraying
- Lint free

## Max-Off

MOPP0002



One-step wiping system that increases your productivity. Removes dust particles and degreases the surface in one motion. Improves paint adhesion and reduces solvent use. 50 wipers per pouch.

## Plastic Spreaders

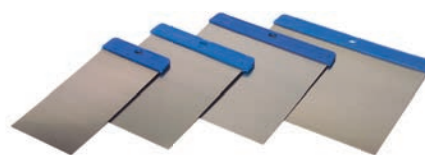
9106 (Flexible Red)



These spreaders are specially designed for the application of putties. Use the flexible spreader for use on flat surfaces. Use the super flexible spreader for use on curved ones. Made of plastic to avoid scratch in the surfaces, with flattened spread-edge, including grip. Available per box (of 100 pcs).

## Japanese Putty Knives

9100



Japanese knives for spreading putty. Made of first class quality steel; very flexible, with grip. Per set of 4 pcs in different sizes.

# PAINT PREPARATION



Bestseller

Colad

## Turbomix Paintsaver®

9500

937010 Wall Mount

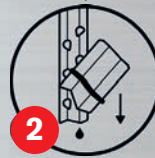
Perfect consistency and pigment blend are crucial for a spotless end result. Mixing paint with the Turbomix Paintsaver® speeds up the process, reduces paint wastage and ensures a perfect result! Dimensions: 22 x 2 cm. Suitable for mixing cups up to 1400 ml. 512 pieces in a dispenserbox.

[www.turbomixpaintsaver.com](http://www.turbomixpaintsaver.com)

BREAK IT  
(BEFORE YOU MIX)



1

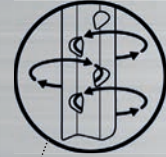
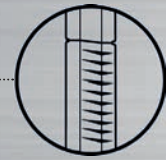


2

TO SAVE PAINT  
AND  
PIGMENTS!

EXTRA STRONG  
& EXTRA LONG  
STIRRER 22 CM!

ERGONOMIC  
HANDLE



DESIGNED TO ACHIEVE  
THE PERFECT BLEND



SUITABLE FOR ALL TYPES  
OF MIXING CUPS



## Turbomix Paddles XL

9520200

Plastic paddle made from recycled synthetic material. Easier stirring and better mixing due to the curved shape and holes. Dimensions: 30 x 3 cm, suitable for mixing cups of 1400 or 2300 ml. 200 pieces in a dispenser box.



## Pencil Bottle 30 ml / 1.0 oz.

9186EMM



Bestseller



Provide your client with a paint specimen so that they can touch up minor damage themselves.

- Content: 30 ml / 1.0 oz
- Lid with built-in brush
- 2 metal mixing balls to obtain thorough mix
- Self adhesive labels to add specimen information

100 bottles in a box.

## Dispenser Bottle 1000 ml / 33.8 oz.

9700



1000 ml plastic bottle for dispensing special diluent to water-based paint. Equipped with a fine, "drop by drop" nozzle. Per bottle.

## Easy2Check®

9300



The most efficient and effective product to check for any irregularities while sanding panels. The 'glossy finish' helps detecting any defects or colour deviations. Spray the panel after the sanding process to check repaired surfaces on irregularities. Can also be used for spray sample checks! 400 ml per spray.

# PAINT PREPARATION

## THE PERFECT MIX!

AVAILABLE IN FOUR SIZES

COMPATIBLE WITH VARIOUS  
PAINT APPLICATION SYSTEMS

SOLVENT RESISTANT

ANTI-STATIC



STACKABLE TO SAVE SPACE

PRECISION PRINTED WITH  
11 ACCURATE MIXING RATIO-  
TIOS:

1:1, 2:1, 3:1, 4:1, 5:1, 6:1, 7:1,  
8:1, 9:1, 10:1, 11:1. \*350 ml has 8  
mixing ratios.

2 MEASURING SCALES  
in millilitres and fluid ounces.

FLAT BOTTOM



\*(350 ml has eight mixing ratios)

## Mixing Cups

Size	Quantity		
	120 pieces 4 x 30 pcs	150 pieces 6 x 25 pcs	300 pieces 6 x 50 pcs
350 ml	-	9350150	9350300
700 ml	-	9370150	9370300
1400 ml	9400120	-	9400300
2300 ml	9410120	-	9410300

## Mixing Cup Dispenser

- 94990350 350 ml (12 oz.)
- 94990700 700 ml (25 oz.) / 900 ml (30.4 oz.)
- 94991400 1400 ml (48 oz.)
- 94992300 2300 ml (78 oz.)



Wall dispenser made of durable metal to hold Colad Mixing Cups. The Mixing Cups are easily dispensed one at a time, keeping them clean and free from dust and saving space in the mixing room. Per piece.

## Mixing Cup Lids

- 9360 350 ml (12 oz.)
- 9380 700 ml (25 oz.) / 900 ml (30.4 oz.)
- 9480 1400 ml (48 oz.)
- 9490 2300 ml (78 oz.)
- 9425LID 6000 ml (303 oz.)

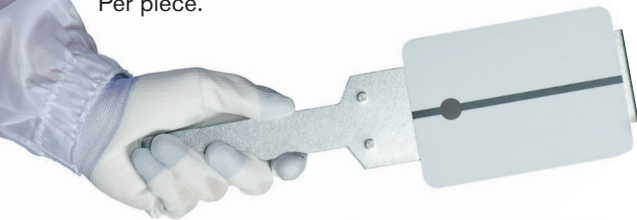


To cover the Colad Mixing Cups and protect paint against dirt and dust. Easy application. 100 pieces in a box, except 9425LID 40/ box.

## Magnetic Holder

931901

To keep your hands clean while spraying.  
Per piece.



## Metal Spray Samples

To test colour accuracy of both waterborne coatings and conventional coatings with a black stripe to indicate the degree of the colours' opaqueness and a 15 mm O hole to match the colour. Suitable for conventional and waterborne coatings.

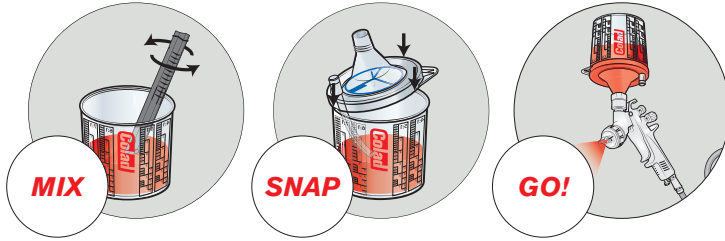
Set of 750 pcs.	Set of 100 pcs.	Set of 25 pcs.
9315 (white)	9315-0100 (white)	9315-GV1 (white)
9315-01 (light grey)	9315-0300 (light grey)	9315-GV3 (light grey)
9315-02 (medium grey)	9315-0500 (medium grey)	9315-GV5 (medium grey)
9315-03 (dark grey)	9315-0700 (dark grey)	9315-GV7 (dark grey)

# SNAP LID SYSTEM®



Simple.

## Mix, Snap, Go!



Use any type of paint.  
2 different types of filters.



130 micron  
**Waterborne  
Base Coat**



190 micron  
**Conventional  
Base Coat**

## Connect any spray gun

let's find your adapter.

Use the adapter tool on: [snaplid.com](http://snaplid.com).



**Large cup**  
30.4 fl. oz.



**Standard cup**  
25 fl. oz.



**Medium cup**  
11.8 fl. oz.



**Small cup**  
3 fl. oz.



**You're serious  
about painting**

we get that.

# SNAP LID SYSTEM®

## Snap Lid System®

Snap Lid® with built in strainer. Available in 2 different microns. Buy your Snap Lids® in a complete set with Colad Mixing Cups.



<b>3 fl oz. / 88 ml</b>	<b>11.8 fl oz. / 350 ml</b>	<b>25 fl oz. / 700 ml</b>	<b>30.4 fl oz. / 900 ml</b>
<b>50 Lids + 50 Cups</b>	<b>50 Lids + 50 Cups</b>	<b>50 Lids + 50 Cups</b>	<b>40 Lids + 40 Cups</b>
93100130SLS - 130 micron 93100190SLS - 190 micron	9350130SLS - 130 micron 9350190SLS - 190 micron	9370130SLS - 130 micron 9370190SLS - 190 micron	9390130SLS - 130 micron 9390190SLS - 190 micron

## Snap Lid®

Snap Lid® with built in strainer. Available in 2 different microns. Packed in a handy dispenser box, easy to mount to the wall at working height with the Colad Wall Mount.



<b>11.8 fl oz. / 350 ml</b>	<b>25 fl oz. / 700 ml</b>
<b>50 Lids</b>	<b>50 Lids</b>
9350130SL - 130 micron 9350190SL - 190 micron	9370130SL - 130 micron 9370190SL - 190 micron

## Wall Mount

937010

Easily mount your Snap Lid Dispenser Box to the wall at working height with this Wall Mount. Attach to the wall with Colad Double Faced Acrylic Foam Tape or use two screws. Per piece.



## Adapter Guide



Brand	Model	Adapter no.
DeVilbiss	TEKNA, CVi, PLUS, GTi, PRi, JGA, Finishline	9370A14
DeVilbiss	Sri Pro	9370A08
DeVilbiss	Starting Line	9370A22
Iwata	LPH-400 & W400LV	9370A09
Iwata	SuperNova, Air Gunsa, LPH300, W300	9370A13
Iwata	LPH-80	9370A18
SATA	NR2000	9370A02
SATA	QCC Full Size	9370A04
SATA	QCC Mini	9370A05
Sagola	Xtreme, GTO	9370A11
Sagola	403-4200, Classic Pro, Mini Xtreme	9370A10
Walcom	GEO F/X	9370A12



## Snap Lid Sealing Caps

9370CAP

Seal your Snap Lid temporarily with a Snap Lid Sealing Cap. Packed in a plastic bag with 100 pcs.

# BOOTH MAINTENANCE SOLUTIONS



**DRY**

A protective solution that is applied dry. Ideal to protect a well-maintained booth, protecting your walls from overspray.

4 layers for a longer protection time (1000 booth cycles or 1 year).



## Film4Booth

6860 (Roll: 90 cm (35.4") x 84 m (275.6 ft) including 6 rolls of tape)  
6880 (3 rolls of tape)

A transparent, protective, self adhesive film that can be applied to mask your booth walls. Protects your walls from overspray and is easily removed by simply peeling off the layers one by one when contaminated.

### Features & Benefits

- Keeps your walls clean
- 4 layers for a longer protection time
- Can be applied over lights and windows
- Easy to remove by peeling off each layer
- Treated with paint adhesion
- Easy to apply

*Colad Film4booth is suitable to use in ATEX zoned areas, please refer to the technical datasheet for exact specifications.*



**Bestseller**

## Film4Floor

6865 (Roll: 90 cm (35.4") x 150 m (429.1 ft))



A self-adhesive strong and durable white film. Makes cleaning very easy.

- White high gloss for optimum reflection
- Strong and durable (100 micron)
- Treated with paint adhesion.
- Easy to apply and cut
- Solvent resistant
- Anti-slip surface
- Easy to remove, does not leave adhesive residue
- Can be used in combination with Dust Control to eliminate dust
- Not anti-static
- Not to be applied in ATEX zone 1, 2, 20, 21 and 22.



### CONSUMPTION

1 roll = 75.6 m<sup>2</sup>



### AMOUNT OF LAYERS

4 layers in 1  
(All layers are numbered)



### APPLICATION METHOD

By hand with applicator and dispenser



### APPLICATION

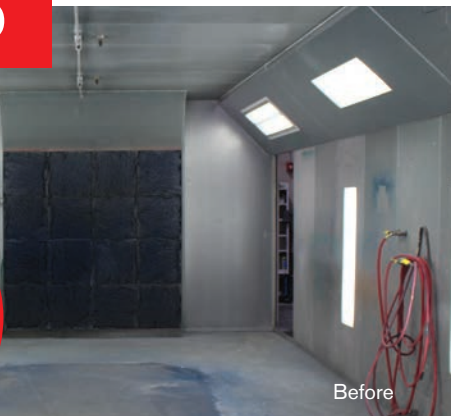
Spray Booth Walls



**HYBRID**

A protective solution that is applied wet, but dries as a peelable layer. Being white in color it is ideal to protect booths which have become discolored. Improves visibility and gives your booth a brand new look and feel!

Give your booth a brand new look!



Before



After

# BOOTH MAINTENANCE SOLUTIONS

## Blizzard White Peelable Booth Coating

467991 3.8 L (1 gal)  
467995 18.9 L (5 gal)

A white, protective coating that forms a strong layer on your booth walls. Protects your walls from overspray, gives them a bright appearance and easy to remove by simply peeling off the layer.

### Features & Benefits

- Keeps your walls clean
- White for optimum reflection
- Easy to remove by peeling off the layer
- Ready to apply



### HUMIDITY

40 - 60% RV



### CONSUMPTION

1 layer = 6.66 m<sup>2</sup>/L  
all other = 16 m<sup>2</sup>/L



### NUMBER OF COATS

Recommended coat thickness: 150 micron. Apply twice until a minimum of 150 micron coat is achieved. Advised amount of coats: First coat in advised micron. Multiple coats can be applied on top of each other (till a maximum of 6 coats) to regain whiteness. All extra coats can be applied in approx. 65 micron. Drying at room temperature.



### APPLICATION METHOD

Apply with spray gun, airless system, brush or paint roller.



### APPLICATION

Spray Booth Walls

## Ice Transparent Peelable Booth Coating

467901 3.8 L (1 gal)  
467905 18.9 L (5 gal)

A transparent, protective coating that forms a strong layer. Protects your lights and windows from overspray and can easily be removed by peeling off the layer.

### Features & Benefits

- Keeps your lights and windows clean
- Easy to remove by peeling off the layer
- Ready to apply



### HUMIDITY

40 - 60% RV



### CONSUMPTION

4 - 6 m<sup>2</sup>/L



### NUMBER OF COATS

Recommended coat thickness: Apply twice until a minimum 150 micron coat thickness is achieved. The applied material will have a milky color. This will turn transparent once dry. Don't apply multiple coats on top of each other. This will reduce opacity and light efficiency. Allow to dry at room temperature.



### APPLICATION METHOD

Apply with spray gun, airless system, brush or paint roller.



### APPLICATION

Windows and Lights

Combine with  :

## Dust Control

467401 3.8 L (1 gal)  
467405 18.9 L (5 gal)



Traps dust and dirt down on paint booth floor to prevent dust from swirling onto paint jobs.

- Reduces cut n buff labor time.
- Apply daily with a pressure sprayer.

## Booth Kit

467999

Blizzard White Booth Coating 15.1 L (4 gal)  
Ice Transparent Booth Coating 0.9 L (1 qt.)



# PERSONAL PROTECTION

## BODYGUARD®

For a full day of working comfort and protection!

The Colad BodyGuard® Paint Suit provides optimum protection against overspray and prevents pollution of the paint job by fibres, dust and lint.

### Designed with the user in mind!

To guarantee you a full day of working comfort, this updated BodyGuard® responds to the experiences of our users. We improved the antistatic capacity with a different type of fabric and redesigned the hood for a better fit!

### Personal Protective Equipment (PPE)

Category I according to European Directive 2016/425 - Basic PPE protects against minimal risks. Protects against non-hazardous chemicals, like waterbased paints or harmless cleaning detergents.

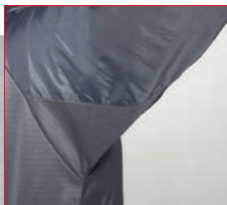
## BodyGuard® Premium Comfort Paint Suit

- 520052PLAIN (Size 52 - S)
- 520054PLAIN (Size 54 - M)
- 520056PLAIN (Size 56 - L)
- 520058PLAIN (Size 58 - XL)
- 520060PLAIN (Size 60 - 2XL)
- 520062PLAIN (Size 62 - 3XL)
- 520064PLAIN (Size 64 - 4XL)

For use during paint jobs to protect the wearer against paint spray and to protect the paint job against fibers, dust and lint. White to prevent distortion of colour vision, very durable and well ventilated. One spray coat in a box.



Improved fit and higher comfort!



1% carbon thread for higher antistatic capacity!



Spacious but fitted hood for a more comfortable fit!



Still the best fit and highest comfort!

### As you are used to, the BodyGuard® has:

- Ultimate heat release capacities
- A highly durable blind zipper
- Durable grey nylon fabric
- Soft, flexible cuffs
- Two back pockets
- Extra movability



According to 1149-3, Method 2: Induction decay time.

### BEST PROTECTION

- Anti Static Coating (EN 1149-1:2006)
- Dust and Lint free
- Protects against overspray
- Tight fit to neck, sleeves and ankles cuffs



### HIGH PERFORMANCE

- Perfect fit for all sizes
- Maximum movability
- Efficient body heat loss
- Comfortable for the entire working day



### DURABILITY

- Durable, protected zipper



### ATTRACTIVE APPEARANCE

- Grey colour
- Non-transparent
- Representative appearance

# PERSONAL PROTECTION

## BodyGuard® Undershirt

The Colad BodyGuard® Undershirt is the perfect garment to wear under your Colad BodyGuard® Paint Suit or any other paint suit. Made of heat regulating fabric that contains 1% carbon which gives the shirt anti-static properties, and prevents it from sticking to your body or paint suit. In contrast to regular cotton or nylon shirts, this undershirt does not attract dust. What's more, the tight fit guarantees optimum freedom of movement and makes it supremely comfortable to wear, even over the course of a full day's work.

- Tight, elastic fit for optimum freedom of movement
- Dust free, lint free, silicon free
- Does not attract dust
- Regulates body heat
- Available in short-sleeve and sleeveless version



Size	Short Sleeve	Sleeveless
S	540048	540148
M	540052	540152
L	540056	540156
XL	540060	540160
XXL	540064	540164



## Nylon Spray Overall

For use during paint jobs to protect the wearer against paint spray and to protect the paint job against fibers, dust and lint. White to prevent distortion of colour vision, very durable and well ventilated. One overall in a box.

Plain version	Colad version	Size
510052PLAIN-USAB	510052	(Size 52 - S)
510054PLAIN-USAB	510054	(Size 54 - M)
510056PLAIN-USAB	510056	(Size 56 - L)
510058PLAIN-USAB	510058	(Size 58 - XL)
510060PLAIN-USAB	510060	(Size 60 - 2XL)
510062PLAIN-USAB	510062	(Size 62 - 3XL)
510064PLAIN-USAB	510064	(Size 64 - 4XL)
510066PLAIN-USAB	510066	(Size 66 - 5XL)
510068PLAIN-USAB	510068	(Size 68 - 6XL)

Personal Protective Equipment (PPE) category I according to European directive 2016/425/EU – Basic PPE protects against minimal risks.

Protects against non-hazardous chemicals, like waterbased paints or harmless cleaning detergents.

**EN 1149-5** According to 1149-3, Method 2: Induction decay time.



## Nylon Spray Coat

- 510152PLAIN-USAB (Size 52 - S)
- 510154PLAIN-USAB (Size 54 - M)
- 510156PLAIN-USAB (Size 56 - L)
- 510158PLAIN-USAB (Size 58 - XL)
- 510160PLAIN-USAB (Size 60 - 2XL)
- 510162PLAIN-USAB (Size 62 - 3XL)
- 510164PLAIN-USAB (Size 64 - 4XL)

For use during paint jobs to protect the wearer against paint spray and to protect the paint job against fibers, dust and lint. White to prevent distortion of colour vision, very durable and well ventilated. One spray coat in a box.

**EN 1149-5** According to 1149-3, Method 2: Induction decay time.



Personal Protective Equipment (PPE) category I according to European directive 2016/425/EU – Basic PPE protects against minimal risks.

Protects against non-hazardous chemicals, like waterbased paints or harmless cleaning detergents.

# PERSONAL PROTECTION

## Disposable Nitrile Gloves Grey

This extra thick and extra strong nitrile glove is powder, silicon and latex free. It combines extra protection with extra comfort due to its high elasticity.

- Thickness 8 mil. (0.2 mm)
- Extra strong, extra flexible and higher tensile strength
- Extra long sleeves (300 mm) and textured surface for better grip
- Especially suitable for working with paints and solvents
- Produced without zinc, sulphur and accelerant to maintain the environment



538000 (size M)  
538002 (size L)  
538004 (size XL)

Dispenser box with 50 gloves.

CE Notified body number: 2777



## Disposable Nitrile Gloves Black



Colad Nitrile Gloves prevent hairs, skin fibres and skin grease from coming into contact with the paint and protect the user against chemical splashes.

- Thickness 6 mil. (0.15 mm)
- Sleeve length 285 mm
- Textured finger tips for better grip
- Especially suitable for working with paints and solvents

536000 (size M)  
536002 (size L)  
536004 (size XL)  
536006 (size 2XL)

Dispenser box with 60 gloves.



536400 (size M)  
536402 (size L)  
536404 (size XL)

Dispenser box with 400 gloves.

CE Notified body number: 2777



## Disposable Nitrile Gloves Blue

A solvent-resistant quality glove that provides excellent protection.

- Thickness 4.5 mil. (0.115 mm)
- Sleeve length 245 mm
- Textured finger tips for better grip
- Especially suitable for working with paints and solvents



530904 (size M)  
530900 (size L)  
530902 (size XL)

Dispenser box with 100 gloves.

CE Notified body number: 2777



### Hand Cleaner

8235 300 ml (10.1 oz.)  
8290 3.8 L (1 gal)

A powerful Hand Cleaner, especially developed for quick removal of daily soiling. Moisturizes hands and prevents skin irritation. Removes easily soiling's like grease, ink, adhesive, oil and paints. Contains natural scrubbing particles.



### Skin Care Cream

8236 3.8 L (1 gal)

Quickly absorbed by the skin, moisturizes the skin, prevents the skin from drying out and silicone free. Frequent use helps the skin to recover, leaving it smooth and supple. Use it after each working day! Apply the Skin Care Cream on dry and clean hands. Rub the cream on the hands until it is absorbed by the skin for maximum skin recovery. Dermatologically tested. Bottle 250 ml.

# CHEMICALS AND ADHESIVES

## Undercoating M80

4010EMM (black)  
4020EMM (white)  
4030EMM (grey)



Undercoating with anti-corrosion and noise reduction properties. Material made of rubber and resins. After drying, the coating is paintable. The coating offers excellent protection against climatic influences and against gravel and stone chips. 1 L tin with spray connection (suitable for +/- 2.5 m<sup>2</sup>).

## Undercoating M40

4000EMM (black)



Protects against corrosion and salt. Noise-absorbing, flexible and chip-resistant. 1 L tin with spray gun connection.

## Undercoating Spray Gun Adjustable

90672674



Gun for the application of undercoating and cavity protection products in tins of one L. Gun with an air connection and a nozzle to apply the product on the surface. This gun is also equipped with an adjustable nozzle to adapt the spray pattern. Per piece.

## Self Adhesive Noise Absorbing Sheets

4050



Colad Self Adhesive Noise Absorbing Sheets are designed to be applied to the interior sheets metal of car doors, trunk, car roofs etc. These sheets are made of 100% heat resistant bitumen. Excellent noise and vibration reduction properties. Colad Noise Absorbing Sheets are repaintable. Thickness: 2.2 mm. Per box of 8 sheets of 250 mm x 500 mm.

# MIXING ROOM

## Stick & Go®

676010 60 cm (24") x 10 M (32 ft.)  
676025 60 cm (24") x 25 M (82 ft.)  
6710025 100 cm (39") x 25 M (82 ft.)

Quick and efficient protection of surfaces like stainless steel table tops.

- White for optimum reflection
- Chemical and solvent resistant
- Strong and durable
- Ribbed anti-slip surface
- Easy to apply and cut
- Not anti-static
- Not to be applied in ATEX zone 1, 2, 20, 21 and 22.



**emm**  
just add paint

*just  
add  
paint*

Part # EMM20

Our brands for progress:

**hamach**  
DUTCH ENGINEERING

**Colad**  
inventing more

**RONIN TOOLS**

EMM Specialties N.A. 405 Fifth Avenue South, Suite 7 Naples, FL 34102  
855.629.1732 sales.usa@emm.com [www.emm.com](http://www.emm.com)

